

Cast Iron Weights from 50 kg to 5 t Top Performance through Genius Design



Safe Lifting and Stacking

Our innovative design approach allows to combine and stack weights of different sizes. To prepare weights for crane lifting, straps are looped through handles making it a "fail-safe" system. Weights can easily be stacked to test scales with max. load higher than 10 tons.



Save Moving and Handling

To ensure productive work, weight dimensions do fit all common pallet jacks and fork lifts and allow access from all sides. Heavy-duty, stainless steel handles facilitate lifting of single weights or stacks by hoists and cranes. Dangerous weight handling with two wheel carts are not required anymore.



A Cost Cutting Approach

Weights are designed to fit on standard pick up trucks or trailers. Lower maintenance and gas cost compared to a full size weight truck result in economical benefits. The new weight design guarantees the flexibility to test all standard industrial and heavy capacity scales.



Swiss Engineering

Evaporative-pattern casting technology leads to smooth surfaces not seen before. A two-component coating finally rejects dust and dirt and protects the weights from corrosion and scratches.

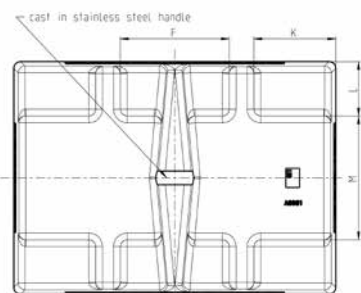
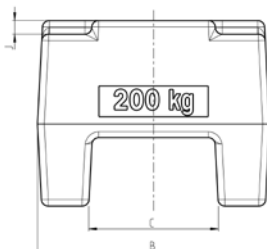
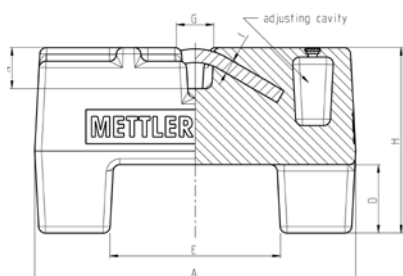


Save Lifting and 360° Access to Guarantee Your Personal Safety

From many years of experience METTLER TOLEDO knows that handling heavy capacity weights to test scales always poses certain risks. Accident statistics show that more than one-third of work-related injuries result from inappropriate lifting. To minimize manual handling operations, METTLER TOLEDO has designed weights that ensure safe lifting, including four-side and top access by fork lifts, cranes, and hoists. This helps to safely operate with weights, and limits unnecessary costs or loss of revenue resulting from lost work days.

Our priority is your personal safety.

Cast Iron Weights from 50 kg to 5 t

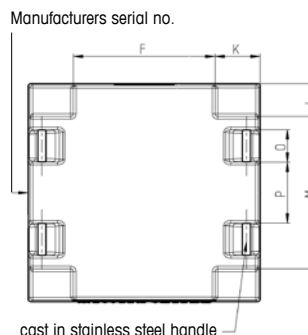
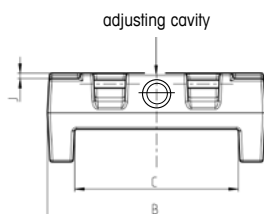
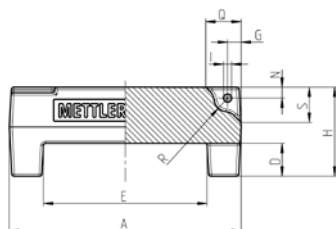


Technical Specifications

Tolerance	OIML class M ₁ (acc. to OIML R111-1:2004)
Material weight	Cast iron: EN-GJL-HB200, reg. DIN EN 1561
Material handle	Stainless Steel
Density weight ρ	7150 kg/m ³ ± 600 kg/m ³
Polarization $\mu_0 M$	< 250 μ T
Surface	Painted (Pantone 648 C) Two-component coating

Cast iron Weights – OIML class M₁

Order Number	Nominal Value	A	B	C	D	E	F	G	H	I	J	K	L	M	N
11125498	50 kg	340	220	100	100	200	–	73	184	20	20	80	70	80	60
11125500	100 kg	340	220	100	100	200	–	50	286	20	20	80	70	80	60
11125501	200 kg	470	340	190	100	250	160	55	271	20	20	120	80	180	60
11125502	500 kg	700	470	250	100	580	180	70	315	30	20	80	110	250	60



Heavy Capacity Cast iron Weights – OIML class M₁

Order Number	Nominal Value	A	B	C	D	E	F	G	H	I	J	K	L	M	N	O	P	Q	R	S
11125503	1000 kg	850	800	600	120	600	520	55	326	40	20	165	120	560	50	120	222	140	50	140
11125504	2000 kg	850	800	600	120	600	520	55	559	40	20	165	120	560	50	120	222	140	50	140
11125505	5000 kg	850	800	600	120	600	520	55	1187	40	20	165	120	560	50	120	222	140	50	140

For quotes or technical information regarding weights please use this email address: weights@mt.com

www.mt.com/weights

For more information



Mettler-Toledo AG

Laboratory & Weighing Technologies
CH-8606 Greifensee
Tel. +41-44-944 22 11
Fax +41-44-944 31 70

Subject to technical changes
© 02/2014 Mettler-Toledo AG
Printed in Switzerland 30003813
Global MarCom Switzerland

